

Ropox Dock-in

User Manual

Keep this manual with the product at all times

Contents

Product information	3
Technical data	4
Dimension sketches	4
Instructions	5
Daily use	5
Permanent lock	5
Instructions	6
Deactivation of the lock	6
Recommendations	6
Mounting	7
With mounting template	7
Without mounting template	8
Maintenance	10
Cleaning	10
Fault finding	11
Waste handling	11
Normal use	11
Storage and transport	11
Spare parts	12
Current spare parts	12
CE-marking	13
EU – Declaration of Conformity	13
Directives	13
Standards	13
Complaints	14

Product information



It is important to read this manual before use.

Product: Ropox Dock-in

Manufacturer: Ropox, DK-4700 Naestved, Tel. +45 55 75 05 00

Application: This Ropox Dock-in station is used in connection with the Ropox swing washbasin. It is designed to provide an extra tabletop around the washbasin and to increase the stability and safety when the washbasin is locked. The Dock-in station is ideal for use in private homes, care centres or similar institutions.

Components

40-40076 Ropox Dock-in for washbasin in fixed height



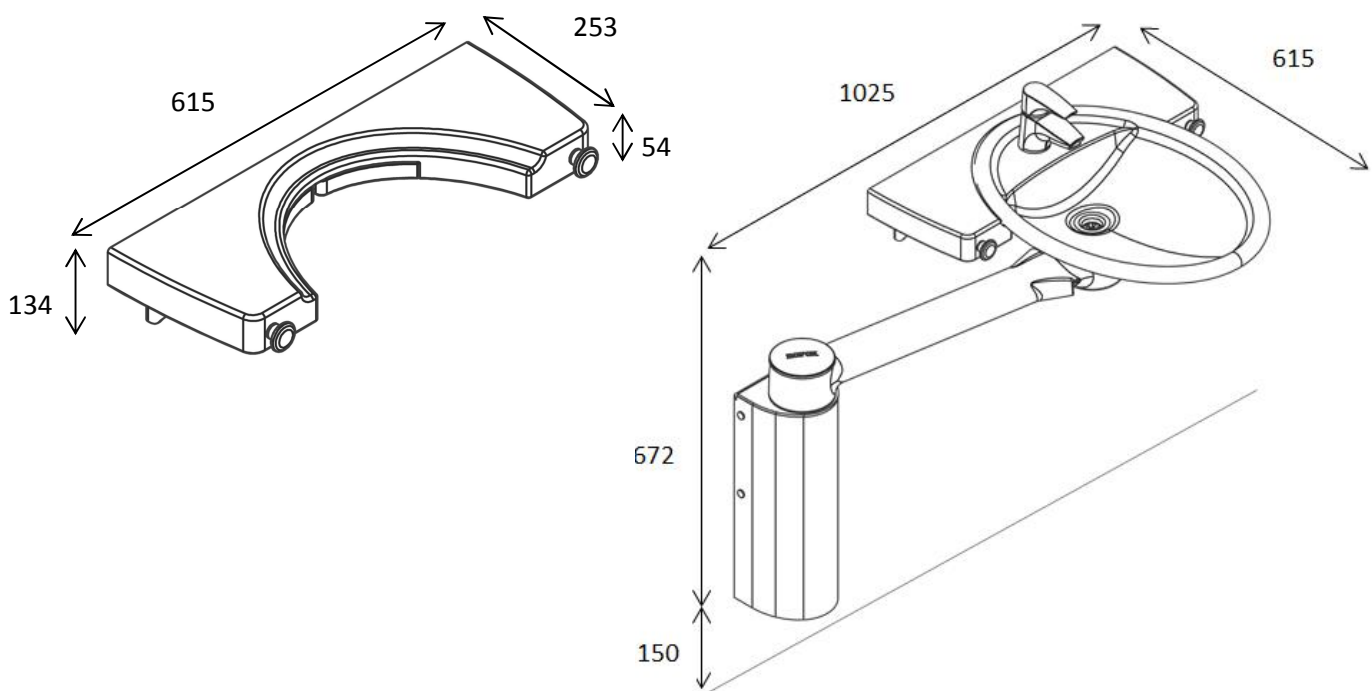
Technical data

Materials	Tabletop: Compact laminate Frame: Surface-treated steel Locking mechanism: Stainless steel
Surface treatment	Stainless steel: Powder-coated, RAL Design 260 6015 Dupont SPC Steel: Blue chromate, powder-coated, white RAL 9003 mat
Maximum load	According to DS/EN 12182 maximum user weight is 200kg. The Ropox Dock-in is designed to support and stabilise the washbasin so that a person of 200kg may lean on the washbasin when it is locked The weight of 200kg is based on a person positioned at an angle of up to 45°



This product has CE-marking and has been tested according to the European standard for assistive devices for disabled persons DS/EN ISO 12182 and the Machinery Directive 2006/42/EC.

Dimension sketches

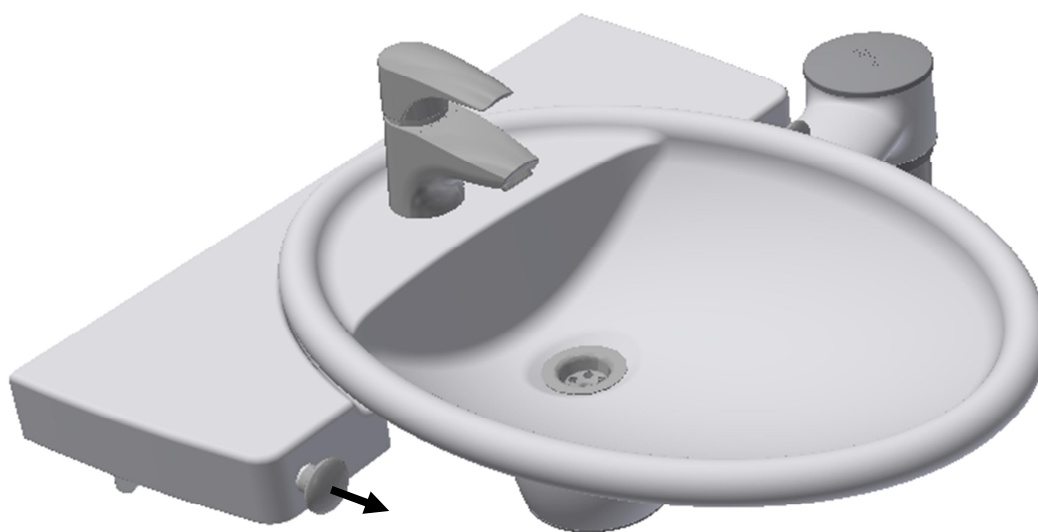


Instructions

Daily use

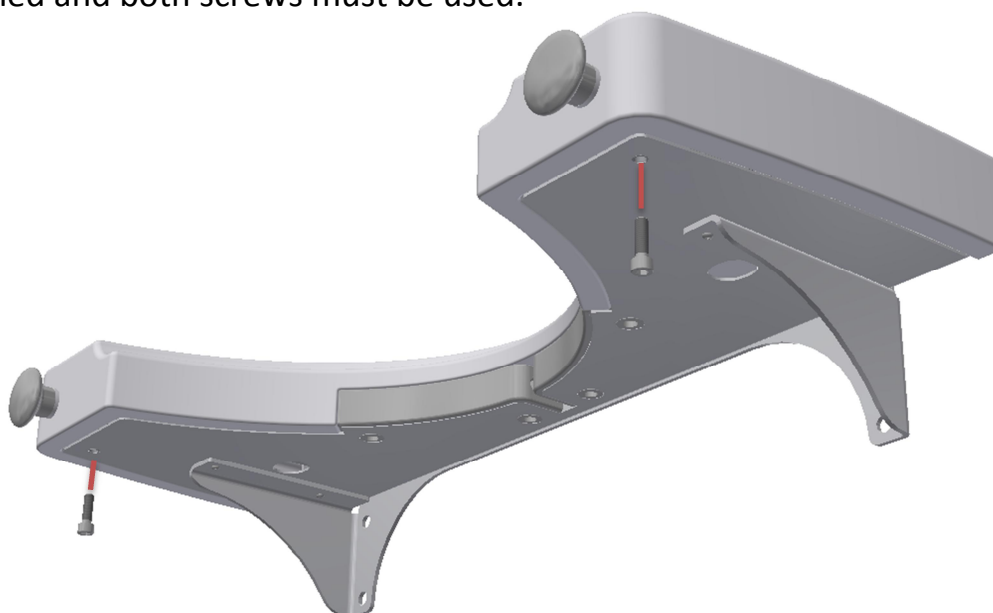
The Dock-in station is designed to ensure easy locking of the washbasin during daily use.

The washbasin is guided into the notch and will be locked automatically in the right position. To release the washbasin pull one of the two handles. This will release the washbasin from the locking mechanism after which it may swing freely.



Permanent lock

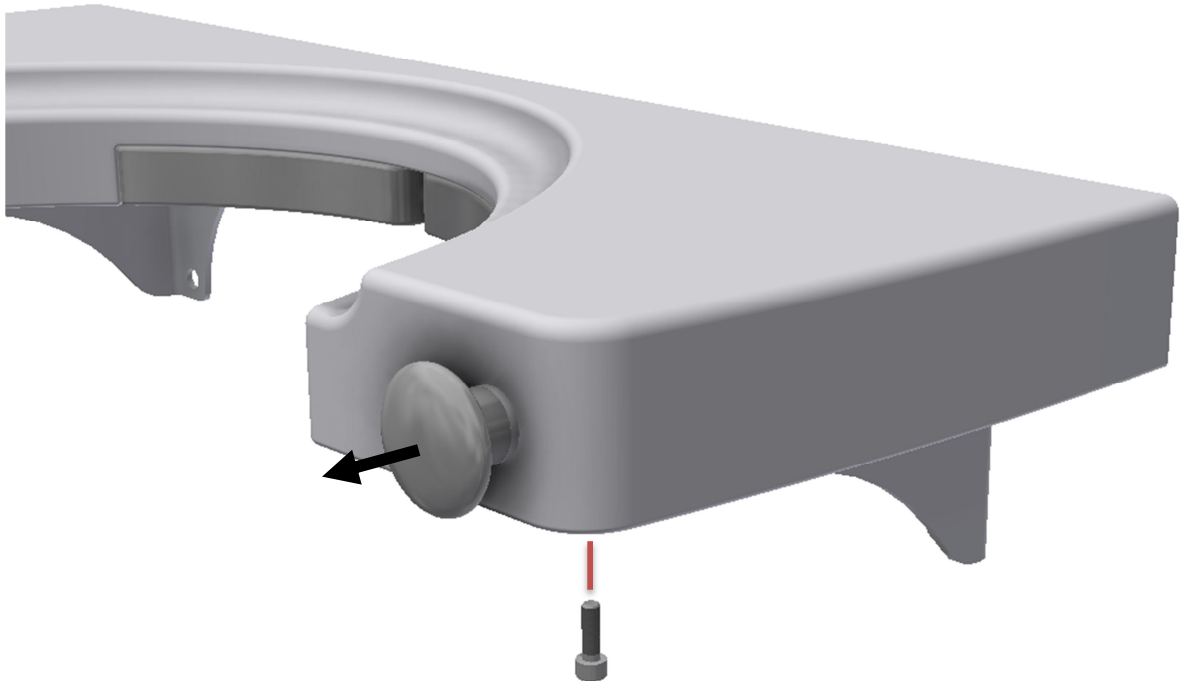
The wash basin can be permanently locked and thereby function as a standard wash basin. This is done by inserting the two supplied M5 screws as shown below. Please note that the wash basin needs to be locked in the Dock-in when the screws are tightened and both screws must be used.



Instructions

Deactivation of the lock

It is also possible to use the screws to deactivate the locking system if desired. This is done by inserting and tighten one of the screws while pulling out the handle. This only has to be done in one of the side to work.



Recommendations

To ensure optimum utilization of the features of the Ropox Dock-in station and to avoid accidents it is important to follow these basic safety procedures.

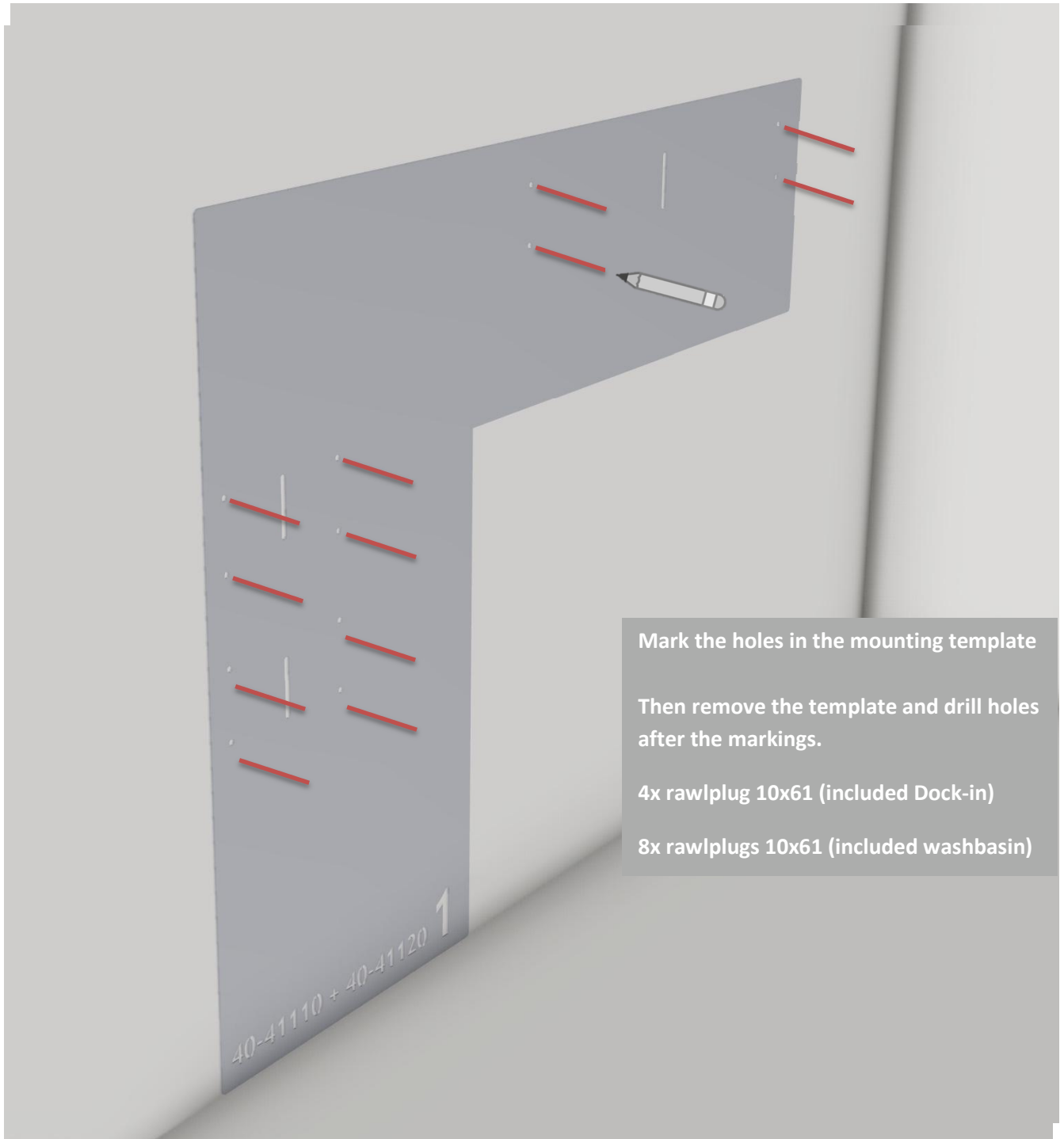
- Be careful not to load the washbasin during coupling with the Dock-in station. This may result in inaccuracies and mean that the washbasin cannot be locked or hits the upper or lower edge of the Dock-in station.
- To obtain a long life of the locking mechanism as well as proper locking of the washbasin it is recommended to guide the washbasin slowly during coupling with the Dock-in station.
- Please note that the Dock-in station is designed to provide stability so that you may lean on but **not** hang on it.

Mounting

With mounting template

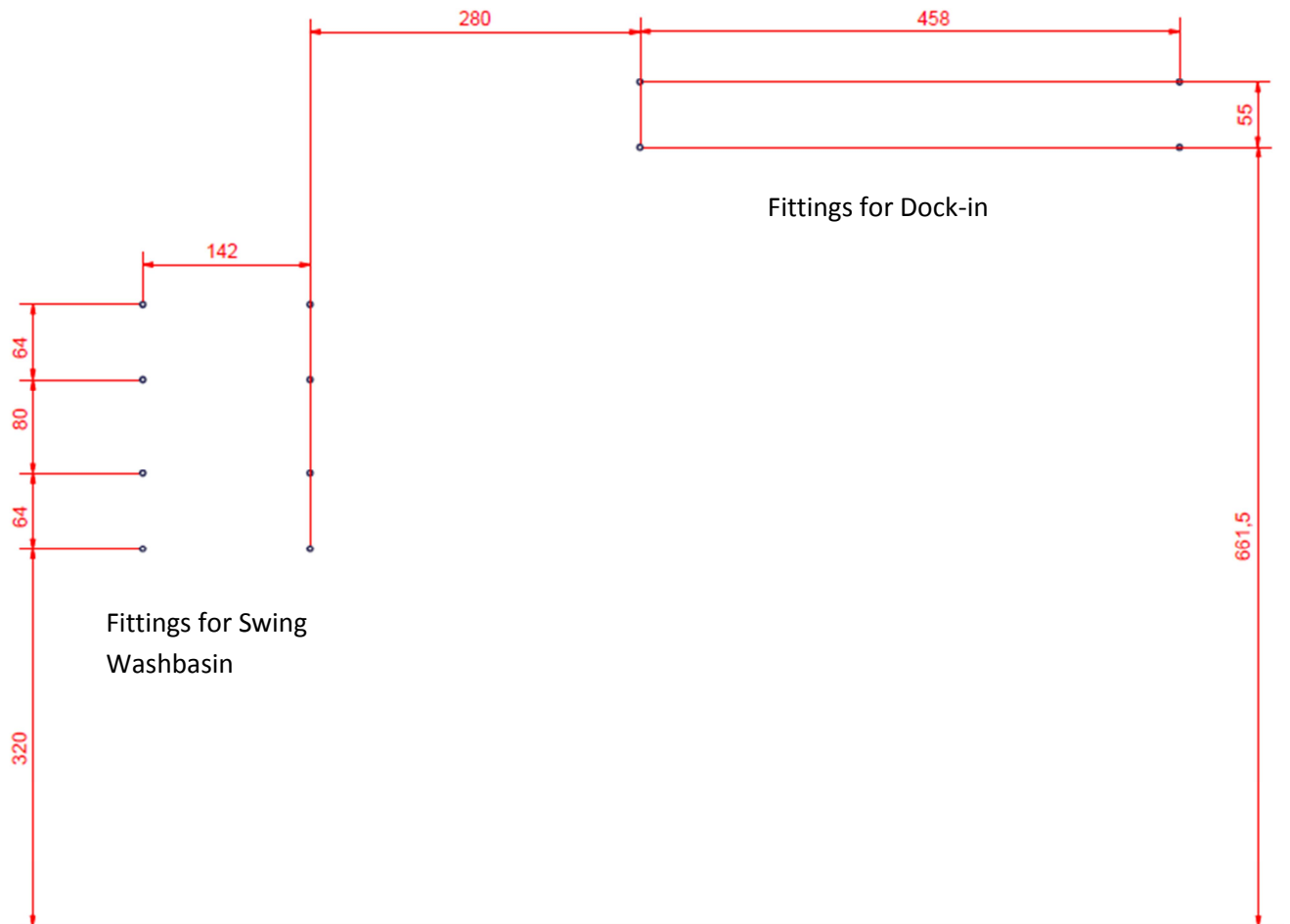
NOTE: If the mounting template should be delivered with the Dock-in, this must be indicated by order delivery.

Part number 40*40069-121

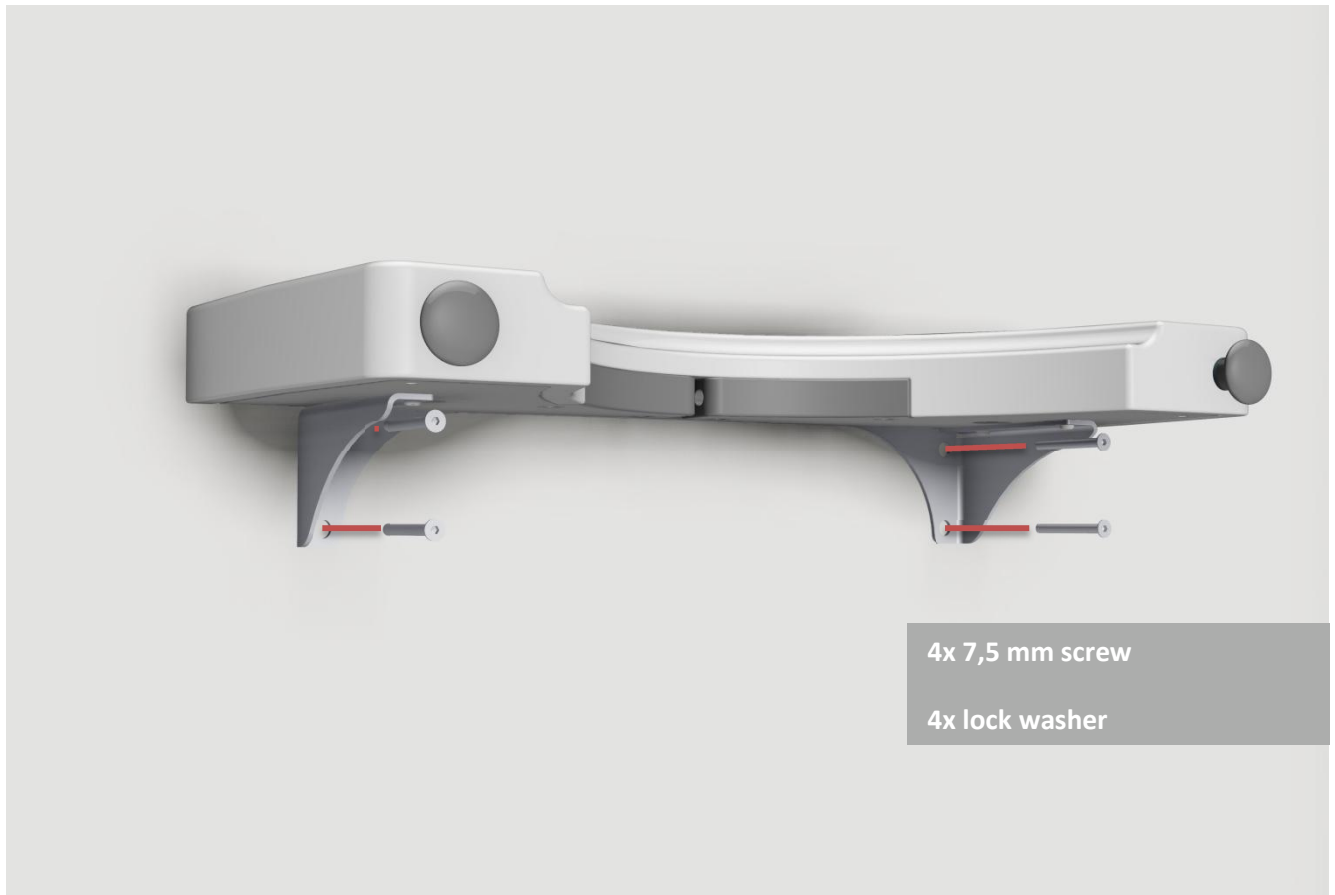


Mounting

Without mounting template



Mounting



NOTE! For mounting of swing washbasin, see separate manual for this

Maintenance

Ropox Dock-in is maintenance-free. However, for safety reasons it is recommendable to check all mounting screws and moving parts at regular intervals to ensure that the screws are fixed securely in the wall and in the washbasin.

Cleaning

Do not use a high-pressure washer to clean this product. Simply use a soft cloth or sponge with soapy water (pH7) of max. 60°C or cleaning alcohol. If a detergent is used the surface of the tabletop may get greasy after some time. This may be removed with equal parts water and chlorine. Clean the Dock-in station at regular intervals to prevent dirt from sticking to the surfaces.

Important:

Do not use scouring powder or other abrasives as they may scratch the surfaces. Also avoid the use of cleaning utensils with sharp edges. Never use strong acids or alkaline products.

Fault finding

Error	Possible remedy
Washbasin cannot be locked	Check that washbasin and Dock-in have been installed as prescribed. Check that they are both level and that the mounting screws are fastened securely in the wall.
Washbasin is locked, but cannot be released	Check if the locking screws are tightened. See page 5. If so please loosen or remove these.
Washbasin hits Dock-in station and cannot reach locking mechanism	Check that washbasin and Dock-in have been installed as prescribed. Check that they are both level and that the mounting screws are fastened securely in the wall.

Waste handling



Used equipment must be disposed of according to national law. We recommend dismantling of the product to the greatest possible extent so that most parts may be reused. Example of sorting groups: Metal and compact laminate.

Normal use



Temperature: 0 °C to 50 °C

Relative humidity: 5% to 85% non-condensing

Storage and transport



Fragile



Keep away from water



This side up

Marking

Spare parts

Current spare parts

40-40071-082

**Fixture for
washbasin**



EU – Declaration of Conformity



Ropox hereby declares that the following product

40-40076

Ropox Dock-in

is classified as Class I and conforms to the following directive and standard:

Directives

Directive No. 93/42/EEC concerning Medical Devices (risk class 1)

Machinery Directive No. 2006/42/EC, amended by Directive No. 98/37/EC.

Standards

DS/ISO 17966: 2016: Assistive devices for persons with functional disabilities -
General requirements and test methods

DS/EN 14971: 2012: Medical devices -
Application of risk management to medical devices

DS/EN 9999: 2011: Assistive devices for persons with functional disabilities -
Classification and terminology

Date: 13-06-2017



Tommy Jensen
Adm. direktør

Complaints

All inquiries concerning complaints must be directed to the distributor representing Ropox on the market in question.

Cf. Ropox General Terms of Sale and Delivery.



Ropox A/S

Ringstedgade 221

DK – 4700 Naestved

Tel.: +45 55 75 05 00 Fax.: +45 55 78 05 50

E-mail: info@ropox.dk

www.ropox.dk