

Ropox Backrest

MOUNTING INSTRUCTIONS

Keep these instructions with the product at all times

These Mounting Instructions comprise:

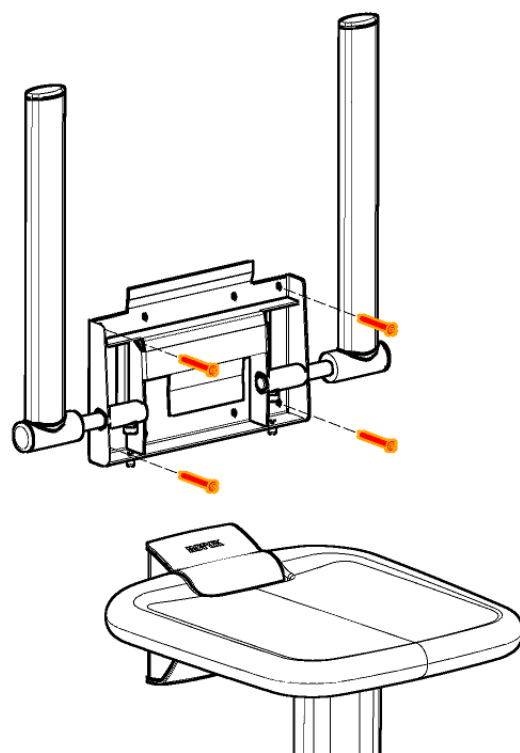
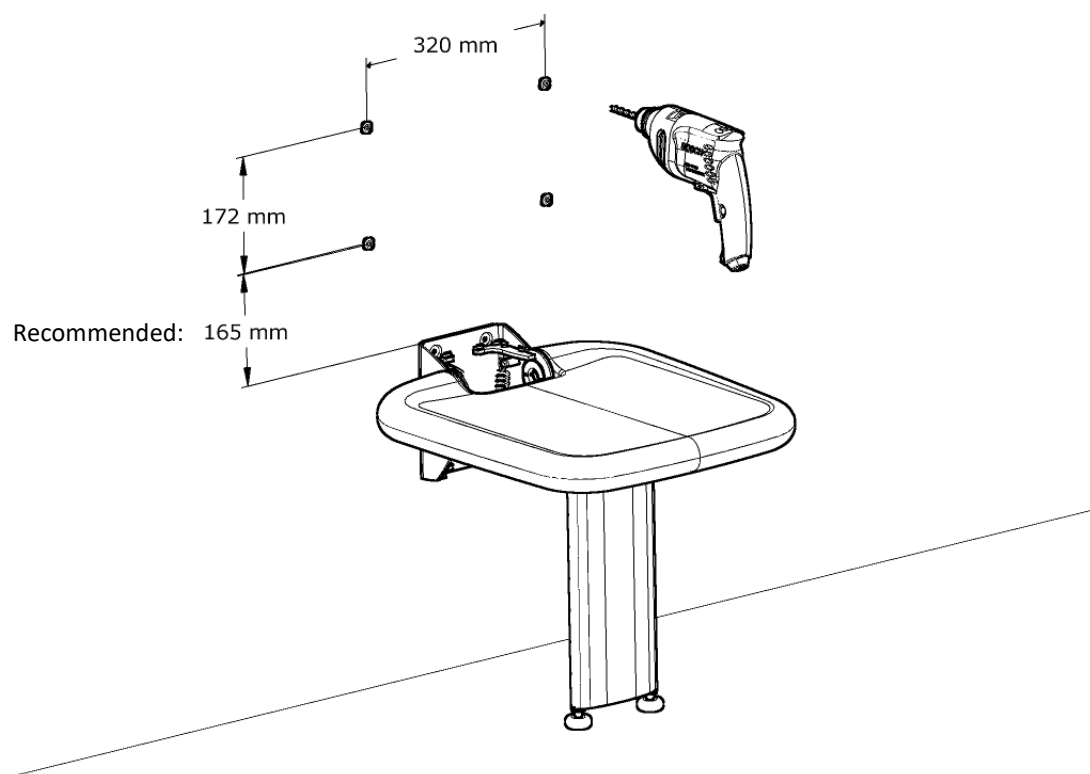
Backrest
with/without armrests

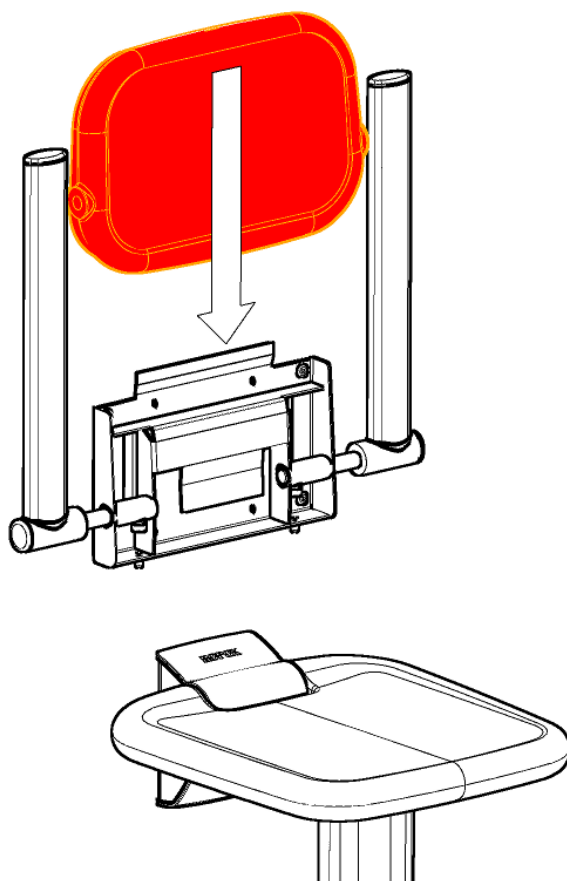
x1

Mounting screws
Rawlplugs

x4

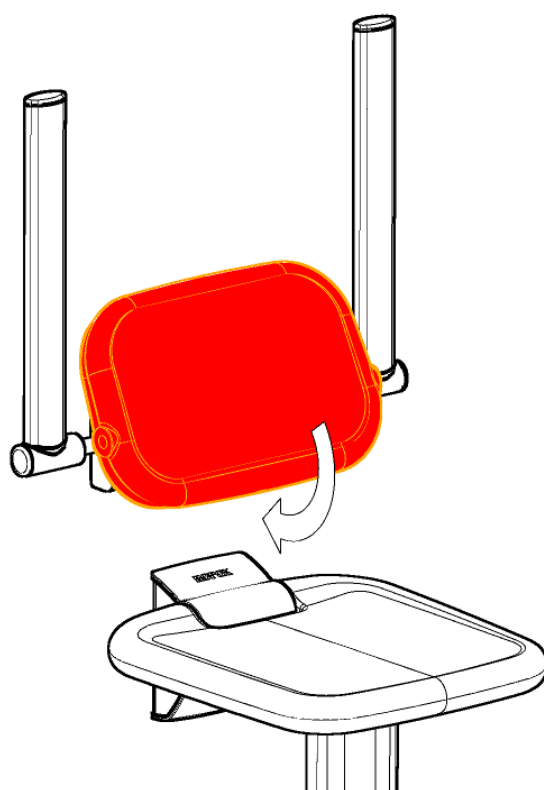
x4



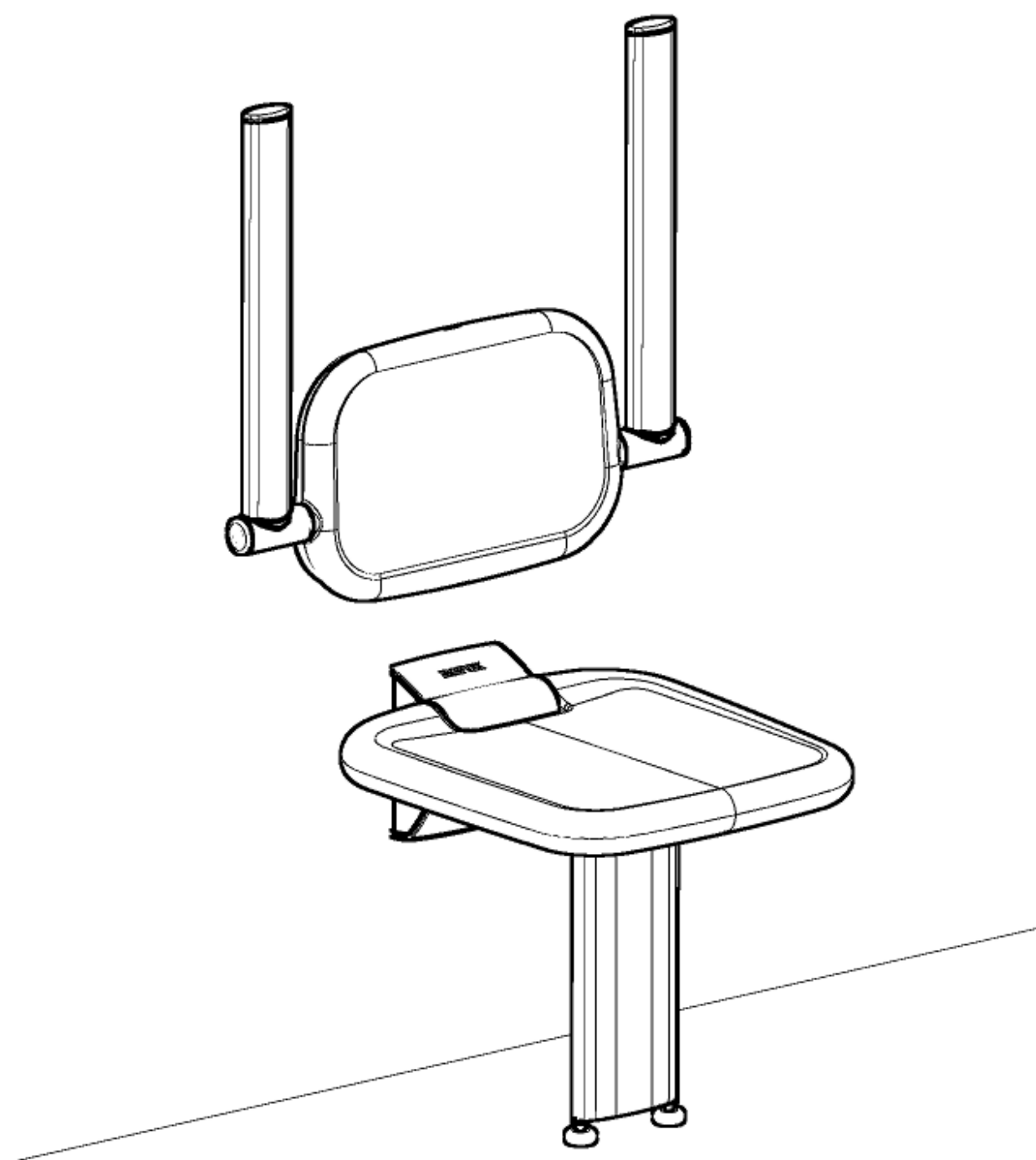


3

**Please note: Mount only the PUR backrest under tempered conditions.
At 10 C° or lower the backrest surface could crack during mounting.**



4



5