

”A quality washbasin for private homes and institutions”



## ROPOX STANDARDLINE

### WHEN YOU WANT A HEIGHT-ADJUSTABLE WASHBASIN THAT WILL LAST FOR YEARS

The StandardLine is an excellent choice if you are looking for a functional solution, that is suitable for both private homes, institutions and hospitals.

You adjust the height with a push on the control switch which hangs on the included hook.

All installations are hidden regardless of the height of the washbasin.

No matter which StandardLine model you choose, you can be sure to get a washbasin that will last for years and is easy to clean as well.

There are 10 types of washbasins to choose from so you can be sure to get the model that fit the users best.



**ROPOX™**

BETTER WAYS TO BETTER DAYS

- A PART OF AddLife®

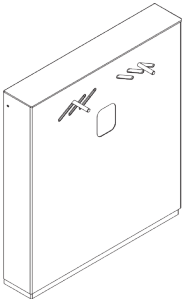
# ROPOX STANDARDLINE

Height adjustment: 30 cm

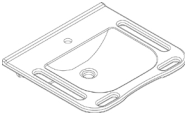
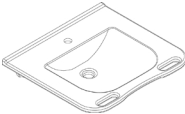
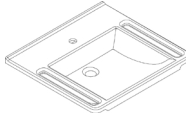
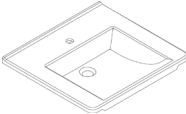
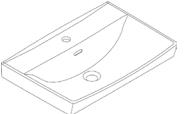

Max. user weight: Testet acc. to DS/ISO 17966:2016  
(see max. user weight below)

## VARIANT/MODEL

STANDARDLINE UNIT
↩



STANDARDLINE UNIT  
200 kg  
66x12x73 cm  
Item no.: 40-14770 (incl. VVS kit)

WASHBASINS FOR INSTALLATION ON STANDARDLINE UNIT					
- Low-mounted washbasin - Optimal handle function	- Low-mounted washbasin - Good handles in front	- Low-mounted washbasin - Long handles on the sides	- Low-mounted washbasin	- Small washbasin	- Washbasin with curved front edge
					
<p style="text-align: center;">WBR-100 60x55.5x12.8 cm 200 kg Item no.: 40-15623 Item no.: 40-15633*</p>	<p style="text-align: center;">WBR-101 60x55.5x12.8 cm 200 kg Item no.: 40-15624 Item no.: 40-15634*</p>	<p style="text-align: center;">WBR-102 60x55.5x12.8 cm 200 kg Item no.: 40-15625 Item no.: 40-15635*</p>	<p style="text-align: center;">WBR-103 60x55.5x12.8 cm 200 kg Item no.: 40-15626 Item no.: 40-15636*</p>	<p style="text-align: center;">WBR-200 60x42x15.5 cm 165 kg Item no.: 40-15621*</p>	<p style="text-align: center;">WBR-201 64x54.5x16.5 cm 165 kg Item no.: 40-15627</p>

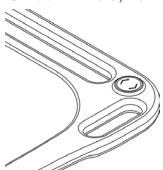
\* Washbasins with overflow.

## ACCESSORIES

Fixed press pad, to the right

Item no.: 40-14778

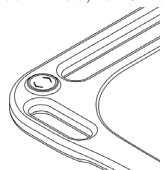
(For WBR-100, 101 & 103)



Fixed press pad, to the right

Item no.: 40-14779

(For WBR-100, 101 & 103)



Plug with overflow

Item no.: 40-40935



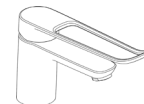
One-handle mixer tap

Item no.: 40-44040



Mixer tap with loop-lever

Item no.: 40-44039



**NB!** Find more information about measurements, technical data, installation interfaces and much more under the product and in the instruction manuals on our website.

The items are produced according to the following Standard: DS / ISO 17966:2016

ROPOX A/S · Ringstedgade 221 · 4700 Naestved, Denmark – Phone: +45 5575 0500 · info@ropox.com · www.ropox.com

**ROPOX™**

BETTER WAYS TO BETTER DAYS

– A PART OF AddLife®