



THE BATHROOM OF THE FUTURE

- FOR PEOPLE WITH DISABILITIES

FOR A SAFER AND MORE
INDEPENDENT LIFE



MAKING IT EASIER TO TAKE CARE OF YOURSELF

The bathroom is a place we use several times a day, and it must be safe, comfortable, and easy to use – also if you need extra support. In a flexible bathroom, aids and assistive devices can be adjusted to meet individual needs, and this makes it an optimal solution for both users and their helpers.

As we get older, our physique weakens, and gradually, we need more and more aids to be independent. With a flexible bathroom, we can use the same decor for a longer time because the products can be adjusted to match our changing abilities and the different needs of several users, which makes it an ideal solution for hospitals, rehabilitation centres as well as in private homes.

A bathroom furnished with flexible aids and assistive technology does not only make the user more independent, but it also offers the helper ideal working conditions. As it is a long-lasting and cost-effective solution, it is no doubt worth the money.



CONTENTS

- 04 **A BATHROOM THAT MEETS YOUR NEEDS**
The right design makes everyday life better
- 06 **WASHBASINS**
For an easier life
- 08 **TOILET LIFTER AND TOILET SUPPORTS**
Aids that make you more independent
- 10 **BATHROOM SOLUTIONS**
Safe bathing and showering
- 12 **A SAFE BATHROOM**
For the bathroom interior - feeling comfortable and supported
- 14 **BATHROOM DESIGN IDEAS**
Different needs require different solutions

With the right aids,
you can do much more
without help from others



A BATHROOM THAT MEETS YOUR NEEDS

THE IDEAL SOLUTION FOR WHEELCHAIR USERS

For a wheelchair user, personal care is not always easy, but with the right aids you can become more independent and get a higher quality of life.

A swing washbasin makes it much simpler to use the toilet because it can rotate and swing 180° so that you can place it in front of the toilet. This way you can wash your hands while seated on the toilet and minimise the transfers to the washbasin.

The swing washbasin is probably the most user-friendly basin for wheelchair users because there is enough room for the chair to get under it. The washbasin provides the best possible turning area for a wheelchair when pushing the washbasin against the wall.

It is essential that the bathroom décor and design meet the user's individual needs and physical condition if the room should be comfortable and easy to use.



THE BEST SOLUTION FOR WALKING-IMPAIRED

If you are walking-impaired, your bathroom products must be stable so that you can use them for support when moving around in the room. When you furnish a bathroom, it is essential to have as many support points as possible to reduce the risk of falling injuries.

A modern solution makes it easier to use the bathroom, and it also minimises the number of transfers. For example, you can adjust the support washbasin both in height and sideways, this way it can also serve as a supportive handle on the way to the toilet. Or maybe all you need is a pair of toilet support arms and a toilet lifter to be able to go to the toilet without a helper by your side.

With the right assistive technology, you feel safer in the bathroom, and you will be able to do more on your own.



WASHBASINS

FOR AN EASIER LIFE

A washbasin must be easy to use, but it should also serve as a support for the user. That is what we keep in mind when we design all our basins: They must be user-friendly and safe.

To make them as user-friendly as possible, they can all be adjusted to meet individual needs, e.g. they are height-adjustable and some can be rotated out in the room so that you can reach them from the toilet if you want to wash your hands while seated.

With our assistive products, you become more independent, and there is of course also the benefit that you will get a stylish bathroom interior that is easy to clean.



Basic



Manual



Electric



ROPOX

SwingLine



- Primarily suitable for wheelchair users
- The design provides sufficient legroom under the washbasin
- Suitable for sitting users, e.g. when washing hands, brushing teeth etc.
- Its ability to rotate and swing makes the washbasin accessible from all sides
- Can be adjusted in the height to meet individual needs
- Cleaning-friendly design without dirt traps
- Dock-in function is recommended to fasten the washbasin

ROPOX

SupportLine



- Especially suitable for walking-impaired
- The integrated, ergonomic grab rails can be used as a support to prevent falling injuries
- Can be height adjusted to meet individual user's needs
- Sideways slidable to minimise the distance when transferring to the washbasin
- The design provides sufficient legroom under the washbasin
- Simple and cleaning-friendly design minimises bacterial growth



QuickWash



AdaptLine*

with washbasin WBR-200



StandardLine*

with washbasin WBR-201



SlimLine*

with washbasin WBR-100

* Read more information about the 6 models of washbasins that can be used on all 3 types of units on our website.

Solid support grabs
for a safe movement



TOILET LIFTER AND TOILET SUPPORTS

AIDS THAT MAKE YOU MORE INDEPENDENT

Most people want to be independent and handle their daily activities on their own – especially when it comes to personal care and hygiene. However, this may not be possible for people with disabilities.

With the right aids and assistive products, you get the support you need when going to the toilet without a helper's assistance. Perhaps, a pair of toilet support arms is all that is needed to get up and reach a standing position; and with a toilet lifter, you can be lowered and lifted when getting up from or sitting down on the toilet. The best part is that it is done very gently.





ROPOX Toilet Lifter

- Lifts and lowers the user to a sitting or standing position
- Easy height-adjustment for a much easier access to the toilet
- Provides the ideal sitting position on the toilet
- The ergonomic design with rounded edges makes them easy to clean and hygienic to use
- Integrated height adjustable toilet support arms



ROPOX Toilet Support Arms

- Offer support and safety when moving around
- Can be adjusted in various positions
- The oval shape relieves the pressure on your hands and forearms
- Height adjustable and with two integrated heights - optimal support when seated and standing
- Cleaning-friendly – the smooth surface is easy to clean



Provide support at several levels –
from a sitting to a standing position.

Make it easy to
get on and off the
toilet.



BATHROOM SOLUTIONS

SAFE BATHING AND SHOWERING

For people with disabilities, the combination of water, soap, and slippery tiles may feel uncomfortable and unsafe, and it may cause an increased risk of falling injuries and accidents. That is why you need solid and stable solutions that make the bathroom safe so that you can feel safe as well.

The solid grabs and shower rails offer a stable support, and if you need to rest, the toilet seat offers great support as well – even in a cramped place. When furnishing and designing your bathroom with the right aids and assistive products, you can reduce the need for assistance when showering, and you get the freedom to be more independent.





ROPOX

Shower seat

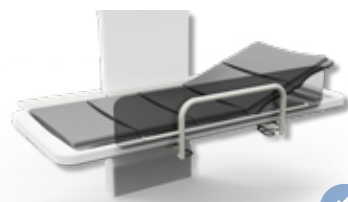
- Reduces the risk of falling accidents
- Height adjustable option
- Non-slip seat with a large surface and a solid grabbing edge
- Hard-wearing, insulating material which does not feel cold on your skin
- Good padding which makes the seat comfortable to sit on and prevents pressure sores
- Armrests and seat can be folded up to a vertical position leaving more space in the room



ROPOX

Grab and shower rails

- Several sizes and designs
- Provide a solid grip and an excellent support
- Cleaning-friendly design for a better hygiene
- A shower shelf can be positioned under the shower rail so that you still have a good hold on the rail



ROPOX

Shower/changing bed

- Height adjustment to meet the user's individual needs
- The slats have a soft top side, which makes them very comfortable to lie on and a flatter side for easier rolling
- Easy up and down adjustment by using a hand control
- Cleaning-friendly as the slats are very easy to remove
- Back support can be mounted
- Can be folded up to provide extra space (wall-mounted)
- Easier to move a user from room to room (Mobile)



ROPOX

Bathtub

- Adjustable in height to meet the user's individual needs
- Getting in and out of the bathtub can be adjusted depending on the person's physical condition
- By adjusting the height of the bathtub, a person can easily be lifted to the bathtub using assistive devices
- Thanks to the hand control, the bathtub is easy to height adjust
- Can be provided with a shower bed cover



Seated showering reduces the risk of falling injuries



A SAFE BATHROOM

FOR THE BATHROOM INTERIOR

Paint an area behind the bathroom furniture and cabinets in a contrasting colour (max. 2 different colours), in a luminance contrast of 30% to make it easier for visually impaired to see the white elements.

Choose a flooring material in a light colour. A floor with just one solid colour makes it easier for people with dementia to orientate themselves in the room because they may perceive dark spots on the floor as holes.

Use anti-slip linoleum on the floor. That makes the room safer - even when the floor is wet.

Choose a sliding door for wheelchair users. It is easier for them to get in and out, it will also provide a larger turning area in the bathroom. Choose a traditional door for people with dementia. They may have difficulties using a sliding door.

Paint the door in another colour than the walls. It is easier for visually impaired and people with dementia to see the door.

 SUPPORT ADJUST-
MENT

FEELING COMFORTABLE AND SUPPORTED

It is very important to furnish your bathroom with many support points and the right aids and assistive products, but other aspects should be considered as well:

- Do you need grab and shower rails in the bathroom for support?
- Do you need a height adjustable toilet and washbasin?
- Are you able to shower in a standing position, or do you need a shower seat?
- Do you need toilet supports at the toilet?
- Do you need more assistance than toilet supports to sit down on and get up from the toilet?
- Would it be an advantage if you could wash your hands while seated on the toilet so you do not have to move to the washbasin?
- Is the distance between the products minimised to reduce the number of lifts and movements?
- How do you ensure optimal space for a wheelchair user?

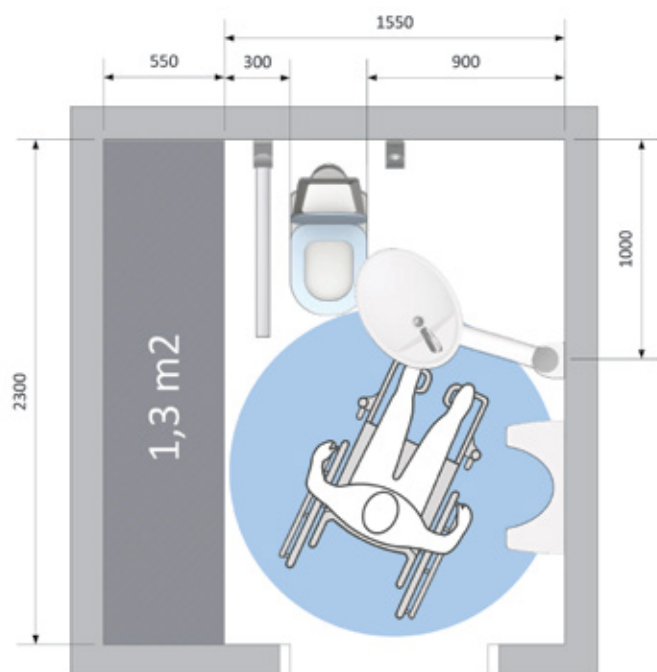
When the bathroom is furnished with flexible and user-friendly aids, you will feel safe, and when you feel safe, you are often able to do more things on your own. For many people, that is the essence of quality of life, and we are very proud to contribute to that.

In our bathroom concept video you will find more inspiration – please find it on ropox.com under the menu Bathroom concepts.



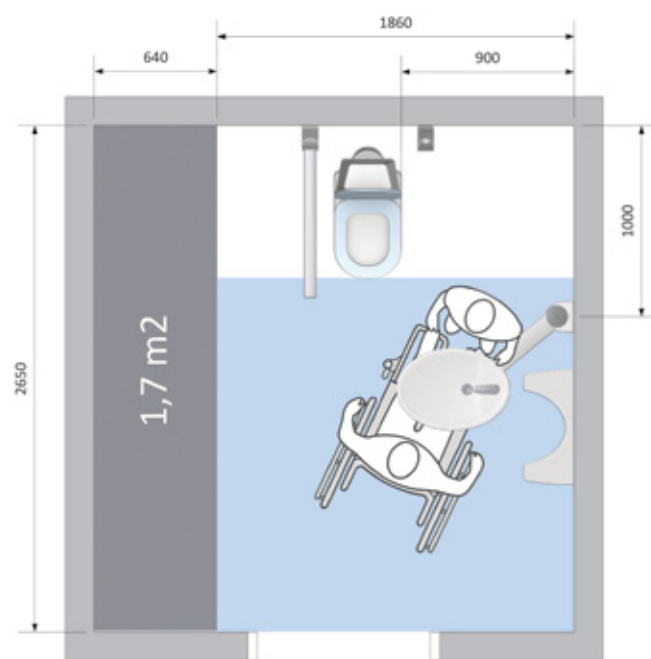
BATHROOM DESIGN IDEAS

Designed according to The Danish Building and Property Agency's guidelines for accessible design 2014, Building Regulations BR10 and BR08 and ISO 21542:2012.



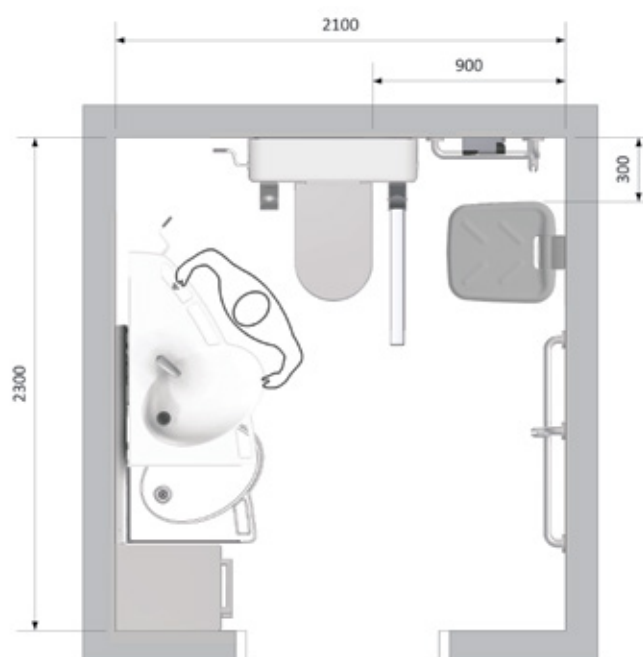
Toilet for self-sufficient wheelchair users

With Ropox solutions the bathroom area can be reduced by 1.3 m² compared to a standard bathroom.

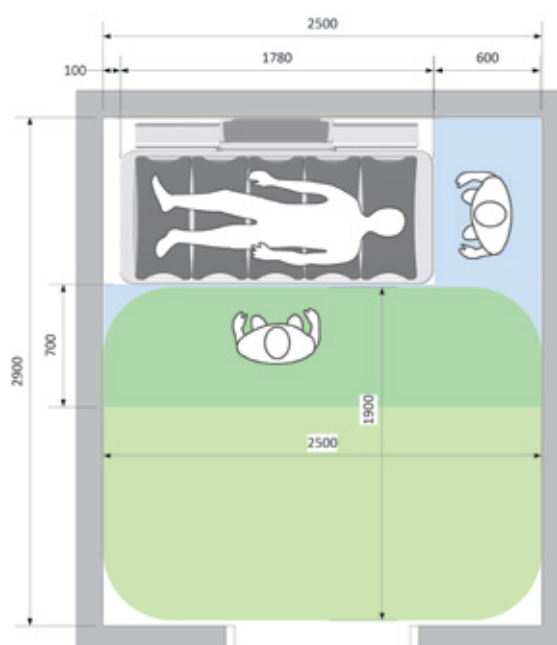


Toilet for wheelchair users who need a carer's assistance

With Ropox solutions the bathroom area can be reduced by 1.7 m² compared to a standard toilet bathroom.



Toilet for walking-impaired users



Shower/changing bed for users who need a carer's assistance in institutions

THE VARIANTS ARE AVAILABLE IN OUR DATA SHEETS OR ON WWW.ROPOX.COM

SWING WASHBASIN CONCEPT



The bathroom provides optimal space utilisation and better conditions for wheelchair users and walking-impaired. The users can use the washbasin while seated and minimise the risk of falling injuries. Thanks to the moveable washbasin, wheelchair users will have more space to manoeuvre the wheelchair in the room. The flexible washbasin also provides the opportunity to design complete bathrooms in less space.

SUPPORT WASHBASIN CONCEPT



This bathroom interior is the ideal solution for users who do not need a carer's assistance when washing hands, using the toilet, and showering. The washbasin is height-adjustable, sideways slidable and easy to clean. The solid and integrated grab rails offer the user safety and minimise the risk of falling injuries. The toilet support arms are designed with two integrated heights which provide great support when using the toilet.

ABOUT ROPOX

FREEDOM AND CONFIDENCE TO BE INDEPENDENT

“People with disabilities deserve an easier life with more self-esteem, quality of life and freedom to safely look after themselves.” This philosophy has been our goal since we set up our business back in 1962. Today, we are more than 60 employees who continue to pursue this mission.

With more than 60 years of experience, we are amongst the world's leading specialists and producers of assistive devices and furniture for the people with disabilities as well as equipment for ergo- and physiotherapy and for rehabilitation. Being part of the AddLife group, we also have access to a large and strong network of partners who specialise in developing services and products to both the private and public healthcare sector.

We are represented in four continents of the world where our solutions are recognised and appreciated for their high quality, flexibility, and accessibility.

Find out more on www.ropox.com.



ROPOX TABLES

BEAUTIFUL HEIGHT-
ADJUSTABLE TABLES FOR
INDIVIDUAL NEEDS



ROPOX KITCHENS

FLEXIBLE AND
HEIGHT-ADJUSTABLE
KITCHENS



ROPOX BATHROOMS

INNOVATIVE AND
EXCITING PRODUCTS
IN A BEAUTIFUL
COHESION

ROPOX™
BETTER WAYS TO BETTER DAYS
— A PART OF **AddLife**